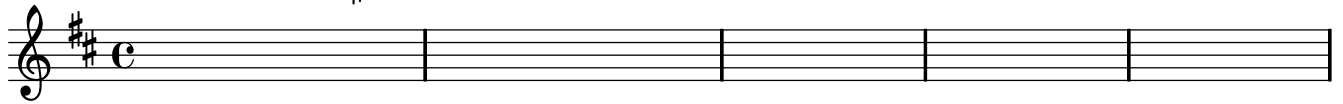


Our Guide and Our Flame

Nathan Creek
nate@deepcreek.org.au

♩ = 140

D A/C# Bm Bm/A G A^{sus4} A



6 D G A D
You hold the world in your hands. You can look at all the pie-

11 D G A G D/F#
- ces and see how they fit your plan. And we want to be a part of it All we

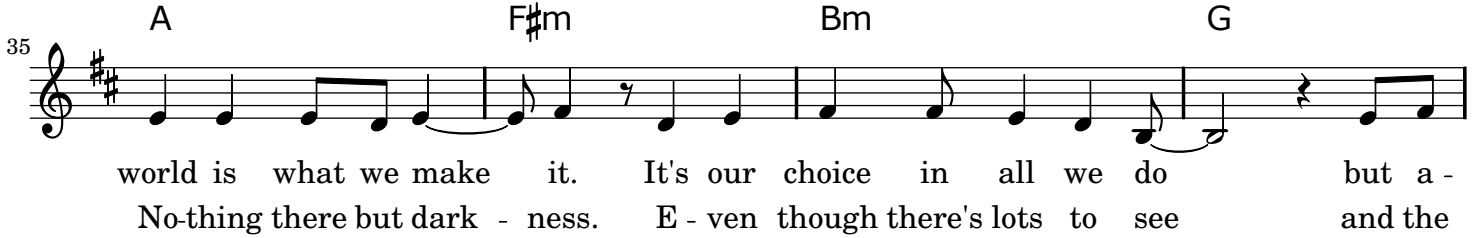
16 G D A/C# Bm Bm/A G A
have to do is use your spi-rit Send it down. Be our guide and be our

22 D A/C# Bm Bm/A G A^{sus4} A
1-2
flame

27 D G
1. Help us to be your peo - ple so we can try to change the world.
2. How could we live with-out you like so ma - ny peo - ple do?

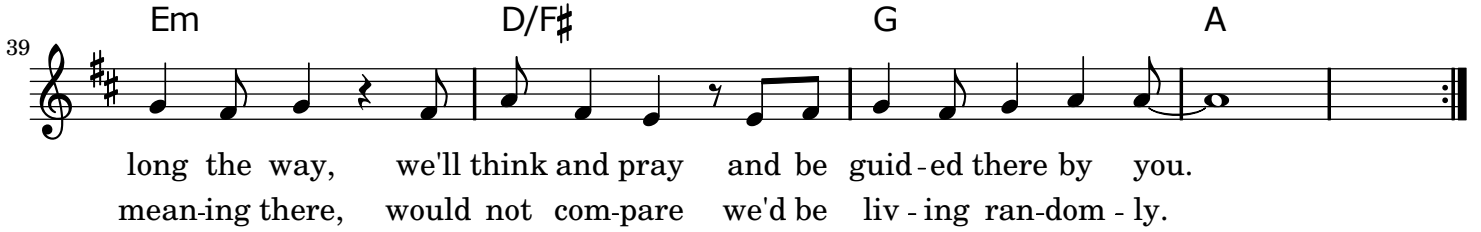
31 D G Bm A G
Not by telling peo-ple what to do, by be-ing part of it our-selves. The
With no spi-rit giv-ing us a hand and giv-ing us a diff-erent view?

35 A F#m Bm G




world is what we make it. It's our choice in all we do but a -
No-thing there but dark - ness. E - ven though there's lots to see and the

39 Em D/F# G A



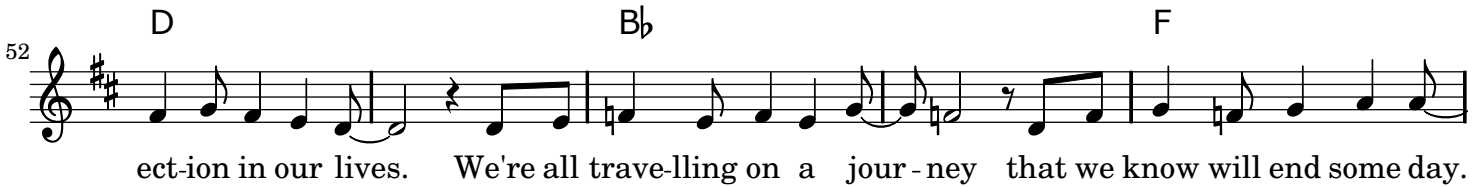
long the way, we'll think and pray and be guid-ed there by you.
meaning there, would not com-pare we'd be liv-ing ran-dom - ly.

44 D D/B C D C



flame With-out you we're dri-ving blind. With no pur-pose and no mean-ing, no dir-

52 D Bb F



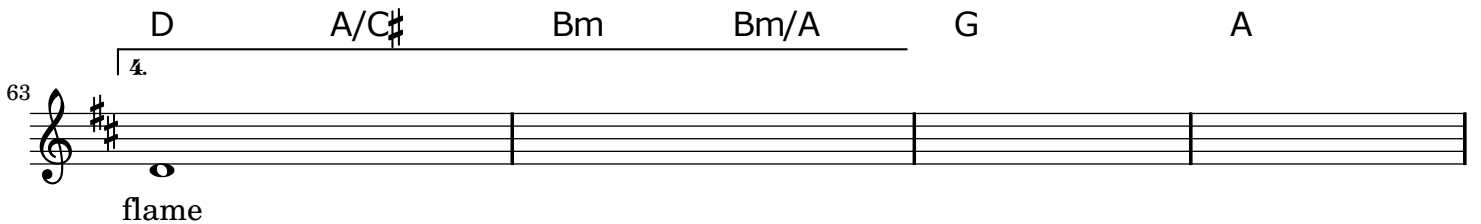
ect-ion in our lives. We're all trav-el-ling on a jour-ney that we know will end some day.

57 F Gm Am Bb C



But it's not the end where we need your help it's the steps a-long the way.

63 D A/C# Bm Bm/A G A



flame

67 D A/C# Bm Bm/A G A



Send it down. Be our guide and be our

71 D A/C# Bm Bm/A G A^{sus4} A D



flame