

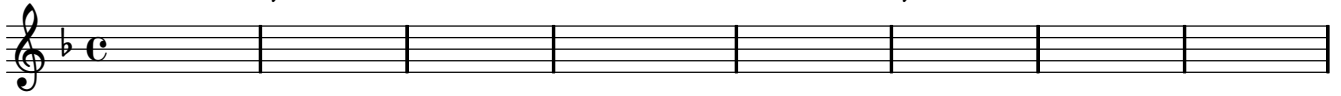
# A Better Way

Nathan Creek

nate@deepcreek.org.au

♩ = 135

capo 3rd fret D G A<sup>sus4</sup> A D G A<sup>sus4</sup> A  
F B $\flat$  C<sup>sus4</sup> C F B $\flat$  C<sup>sus4</sup> C



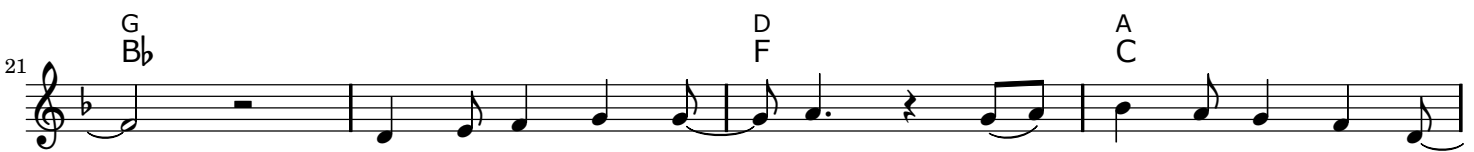
1. Learn - ing what's im - por - tant. How our faith's de - fined.  
2. How to love our neigh - bour? Find the things they need.



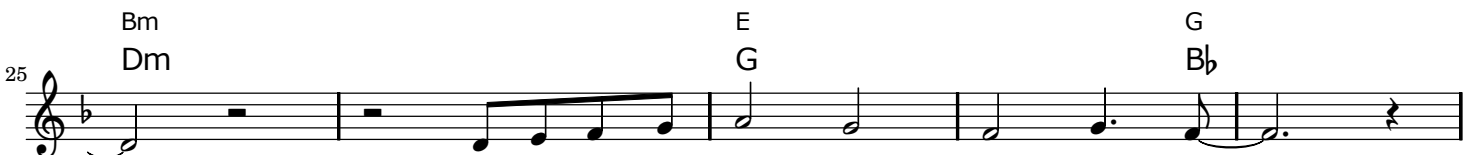
How to tell the truth from all the choice we find  
It's not al - ways ea - sy, it's not al - ways clear.



Learn - ing to in - ter - pret all we see and hear  
Love is not just giv - ing. It's an at - it - ude



Find - ing com - mon gro - und even though we dis - ag - ree  
Tol - er - ance, com - pas - sion, re - spect and grat - it - ude.



Giv - ing us the power to un - der - stand  
Mak - ing sure we're pat - ient and we're kind.



We should not be figh - ting our fel - low man  
Mak - ing sure we're keep - ing an op - en mind.

35

D F G B $\flat$  A<sup>sus4</sup> C<sup>sus4</sup> A C D F G B $\flat$

Chorus. Through our liv - ing spread the mess-age wide In our ex-am-

40

Bm A D G  
Dm C F B $\flat$

- ple show that God is in our lives. With our ex-pres - sions of

45

A<sup>sus4</sup> A Bm A/C# D G A<sup>sus4</sup> A  
C<sup>sus4</sup> C Dm C/E F B $\flat$  C<sup>sus4</sup> C

to - ler-ance and grace We will show the world there's a bet-ter way

51

D G A<sup>sus4</sup> A D G A<sup>sus4</sup> A C  
F B $\flat$  C<sup>sus4</sup> C F B $\flat$  C<sup>sus4</sup> C E $\flat$

there's a bet-ter way

61

C G/B D C G/B  
E $\flat$  B $\flat$ /D F E $\flat$  B $\flat$ /D

Bridge. It's a way of just-ice, it's a way of peace and if we keep on try - ing,

69

G/B F#m G#m A B E A B<sup>sus4</sup> B E A B<sup>sus4</sup> B E A  
B $\flat$ /D Am Bm C D G C D<sup>sus4</sup> D G C D<sup>sus4</sup> D G C

it will ne-ver cease

83

B<sup>sus4</sup> B E A C#m B  
D<sup>sus4</sup> D G C Em D

- ing spread the mess-age wide In our ex-am - ple show that God is in our lives.

90

E A B<sup>sus4</sup> B C#m B/D# E A B<sup>sus4</sup> B  
G C D<sup>sus4</sup> D D Em D/F# G C D<sup>sus4</sup> D

With our ex-pres-sions of to-ler-ance and grace We will show the world there's a bet-ter way